

# VIDEO MICROSCOPE

## BVM-1070

### 4K/2K/1080P FULL HD (VIA HDMI) ;1080P (VIA USB)



BVM-1070 is a multifunctional digital microscope individually designed. It realizes Full HD, high object distance, multifunction and multi-output at the same time. With help of the measuring software, it can easily meet many different requirements in many fields, such as industrial overhaul and teaching demonstration. And its appearance design combines more ergonomic consideration, provides users with better experience. We sincerely wish this product can release your eyes and improve your work quality. Thanks for your support.

## Specification

Image Sensor	16 Megapixel SONY CMOS 1/2.3 HD Sensor
Video Output	4K/2K/1080P Full HD (via HDMI) ;1080P (via USB)
Video Format	MP4
Magnification	Standard Magnification 180X (Max up to 360X)
Photo Resolution	16M 4608x3456, 14M 4320x3240, 12M 4032x3024, Min 640x480
Photo Format	JPEG
Focus Range	5cm to 15cm
Frame Rate	4K 24@fps 1080P 60@fps 720P 120@fps Max 240f/s (VGA)
Video Output	HDMI/USB
Storage	TF card storage, max to 64G
PC Support	Support Windows XP/7/8/10 system, including PC measuring software(gift)
WiFi	Microscope support WIFI connection (the connection range is about 15 meters)
Stand Size	17*12*20cm
Screen Size	5.1 inch
Package Including	1*table stand, 1*power supply, 1*USB line, 1*HDMI line, 1*manual, 1*remote control,
Package Size	28*22*17cm/1.9Kg

LINE : @ITOKIN2000

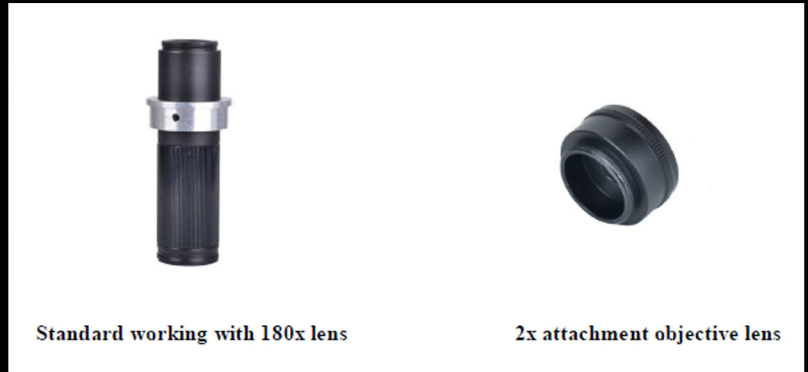
TEL : 02-9744354-6

EMAIL : SALESITOKIN@GMAIL.COM

# VIDEO MICROSCOPE

## BVM-1070

## 4K/2K/1080P FULL HD (VIA HDMI) ;1080P (VIA USB)



BVM-1070 Standard working with 180x lens, if you add a 2x attachment objective lens then the original magnification also will double, that means it's a 360x lens.

## Remote Control



\*Freeze screen: freeze screen image, can be operated under the standby, video and capture mode.

\* Digital magnification & digital reduction: digital zoom can up to 8X

\* Luminance+ & luminance-: exposure from +2.0 to -2.0

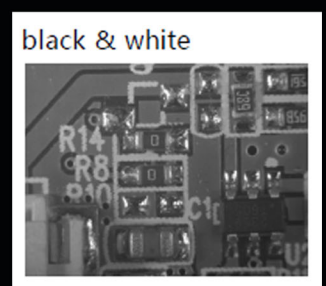
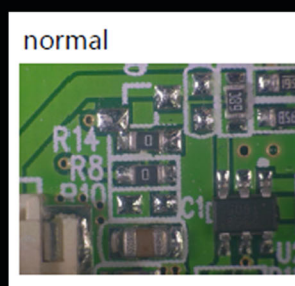
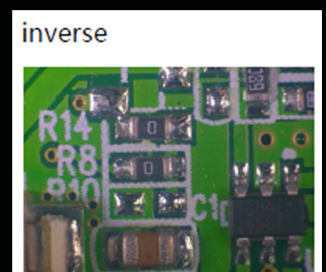
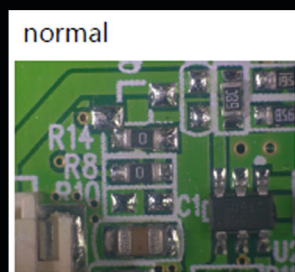
\* Lock/unlock: lock the file when recording to avoid delete by mistake.

\* Sharpness+ & sharpness-: there are three sharpness: high, medium and low, two buttons can switch the sharpness but the sequence is different.

\* Contrast ratio+ & contrast ratio-: the principle is same as sharpness.

\* Inverse color: please take the below pictures as reference

Black & white: please  
take the below pictures  
as **reference**



LINE : @ITOKIN2000

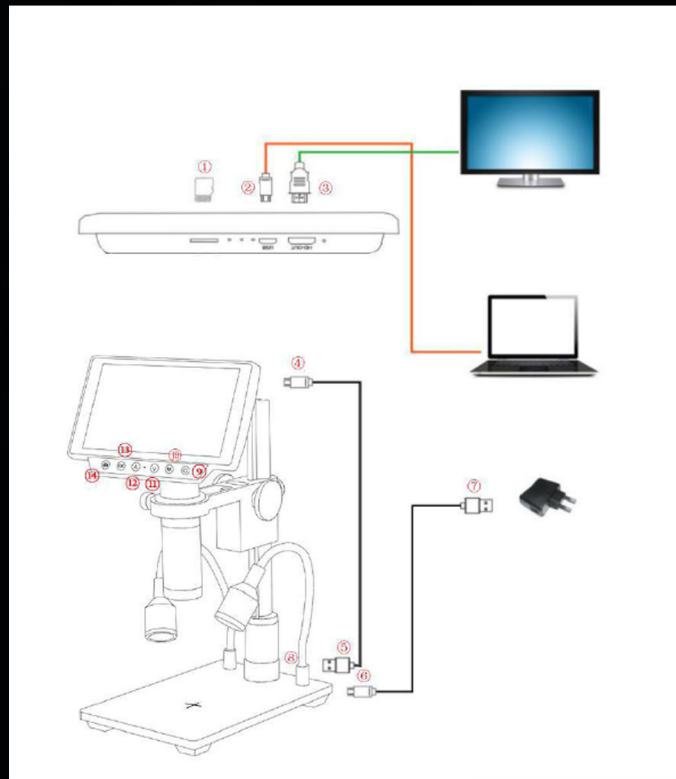
TEL : 02-9744354-6

EMAIL : SALESITOKIN@GMAIL.COM

# VIDEO MICROSCOPE

## BVM-1070

### CONNECTION AND OUTPUT



Besides of the output to the microscope screen itself, BVM-1070 still has 3 kinds output as HDMI, USB and TF card storage. The below is an aerial view of the different ports of the main device, we will expand it in the later chapters.

\*Battery: The product is reserved for battery installation slot with battery interface, and the interface size is 3.5mm. The product is not equipped with batteries; You can buy it on your own.

\*The product design battery is polymer battery, battery size: 42x30x5mm, working voltage 3.7v-4.2v, current 500ma-2000ma (the larger the current, the longer the standby time); The USB port can also be powered by a charger.

- ① TF card storage ( to storage photo or video)
- ② USB output (output to the PC via USB line)
- ③ HDMI output (output to the HDMI monitor via HDMI line)
- ④ Microscope power supply
- ⑤ USB power supply for microscope
- ⑥ Base double lamp power supply
- ⑦ USB DC in( provide power to microscope and LED light)
- ⑧ LED light adjustment (control the brightness of the light)
- ⑨ turn on/off button
- ⑩ menu button
- ⑪ button down
- ⑫ button up
- ⑬ confirm button
- ⑭ mode switch(capture/video/view)

LINE : @ITOKIN2000

TEL : 02-9744354-6

EMAIL : SALESITOKIN@GMAIL.COM



# VIDEO MICROSCOPE

## BVM-1070

## WIFI CONNECT SETTING FIRST

First use

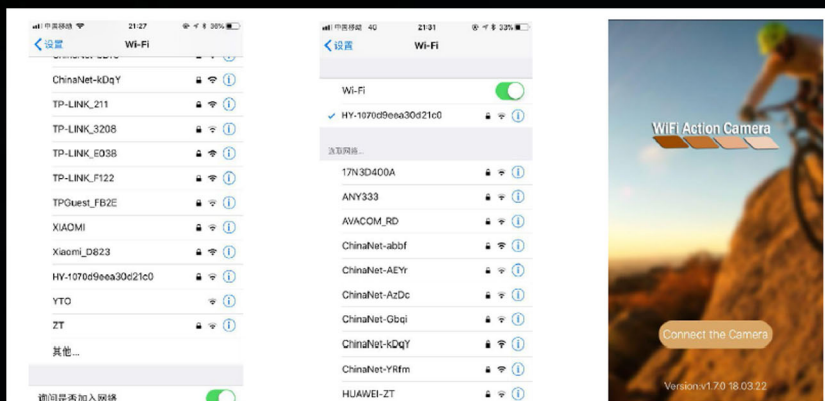
Step1: download APP

You can download it as follows:

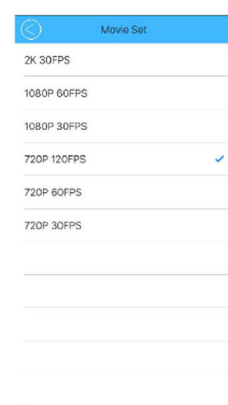
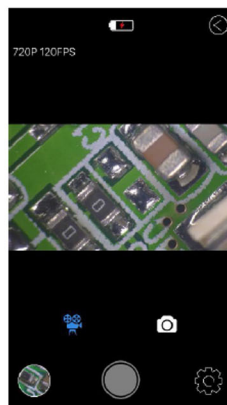
IOS users search for "WiFi Camera" in the APP Store to download  
Android users search for "WiFi Camera" in application stores to download

First step: open the WIFI function through remote control, WIFI function can be only open by remote control, then it will display the account and password, the account is: HY-1070d9eea30d21c0 password: 12345678

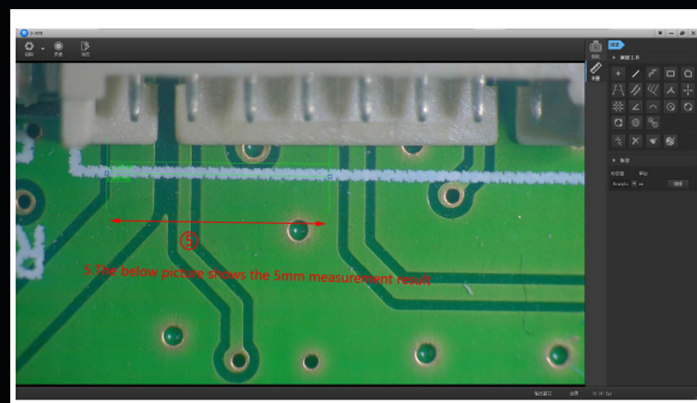
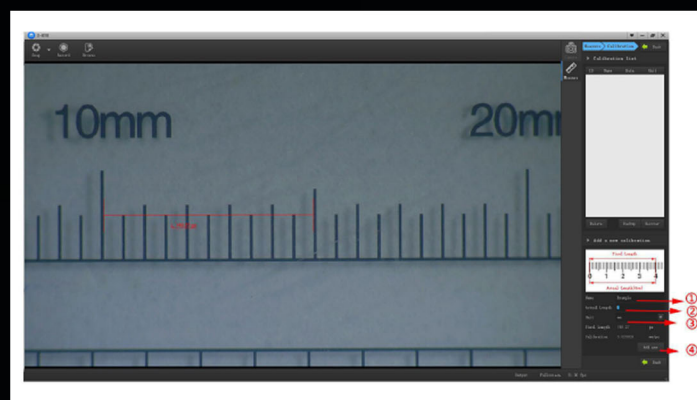
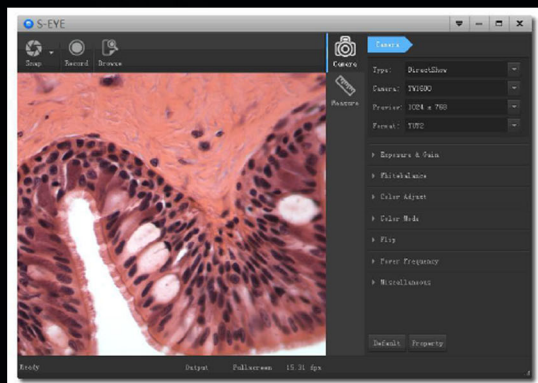
Second step: open the WIFI on the mobile phone, you can check the WIFI network HY-1070 then click to connect, it will show a tick when connect success, open the WiFi Action Camera APP to connect Camera.



This is the image of a successful connection.



## S-EYE SOFTWARE



### Overview

S-EYE is an application for imaging a dynamic image processing, it has the following characteristics:

1. Support a variety of cameras, can switch at any time to use.
2. using GPU rendering for image previewing, support for live image display of high-resolution and high frame rates.
3. Support dynamic image measurement function.
4. The software interface is easy to operate.

### Software Installation

Download the software:

The "S-EYE" can support only the Windows system, the users can also download by the link on the official website.

The operating systems:

Windows XP SP3, Windows 7, Windows8, Windows10

The operating environment:

Microsoft.Net Framework 4.0, Microsoft Visual C++ 2010

If there is no the two complete runtime library, there will be an error when installing the software.

If you are unable to enter the link or download the files, please contact with the customer service.

After downloading successfully, open the zipped files and install the software.